

Multi-Task 120 Features

Cooling



The Hydraulic system has been designed to work for extended periods at temperatures up to 45°C. The system includes 4 radiators; 2 to cool the engine and intercooler and 2 further units to cool the hydraulics. These work in conjunction with 2 heavy duty hydraulically driven cooling fans mounted below the radiators.

Service



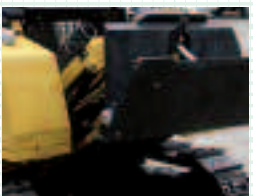
GreenMech design with serviceability in mind. The rear engine and cooling fans are accessed through 2 lockable side doors and 1 removable rear panel giving access to the whole engine compartment. Above this is a hinged grille supported by 2 gas stays for accessing the 4 radiators. The main hydraulic system can be reached by tilting the cab forward using the manual hydraulic jack.

Mulching Head



Capable of mulching material up to 100mm (4 inches) in diameter as well as reducing stumps.

Lift Frame Pivoting:



The tool carrying lift frame will lift and lower and can additionally be moved by 20° to the right or to the left. Thanks to the float controls of the self-regulating hydraulics allowing the attachment to adapt automatically to the slope conditions.

Multi-Task 120 Technical Specifications

Length total (with Mulcher Midiforst 1500):	4,400mm
Width (without extension equipment max):	1,720mm
Height, overall max:	2,420mm
Deutz 118ps 4 Cylinder Diesel Engine (Pollution Emission Level 4, water cooled with turbo-charged intercooler)	
Fuel Consumption at 75% performance:	15 Litres / working hour
Lift capacity max:	2000kg
Lift height max:	500mm
Lift depth max:	150mm
Fast change-over system (suitable for Cat and Bobcat attachments)	
Roll angle:	60°+
Side gradient/use max:	45°
Chassis incline angle max:	30° on slope of 45°
	Thanks to patented SAFE-Trak chassis
Ground clearance min:	290mm
Ground clearance max:	640mm
Weight without attachment tool equipment:	4,880kg
Weight with Mulcher Midiforst 1500:	5,740kg
The noise level (outside noise) is 109dB (A) measured to 2000/14/EG.	



featuring the unique SAFE-Trak Technology



Green Mech Ltd
A Turner Company

The Mill Industrial Park, Kings Coughton, Alcester, Warwickshire B49 5QG.

Tel: +44(0) 1789 400044. Fax: +44(0) 1789 400167.

E-mail: sales@greenmech.co.uk

www.greenmech.co.uk

engineering for a greener environment

We reserve the right to change or modify specification without notice.

Green Mech Ltd
A Turner Company

engineering for a greener environment

Multi-Task 120



The stability and ground clearance the job requires

The unique patented SAFE-Trak Chippers have enabled GreenMech Ltd. to win the contract to supply, through MVS Zeppelin, the Deutsche Bahn railway network and their contractors with over 100 tracked units. They have been so impressed with the SAFE-Trak system that they asked for a special machine to be designed that would enable them to get their overgrown embankments in check and to control the vegetation on a 3-4 year program. This request initiated the development of the Multi-Task 120. The initial specification of the Multi-Task unit requested by the Deutsche Bahn railways asked for a hydraulically driven power unit that would comfortably work on banks in excess of 35°, cutting and mulching vegetation up to 100mm in thickness with the operator sitting in the comfort and safety of a fully enclosed cab. This unique unit has been designed with a mounting plate that will accept many of the Bobcat or Caterpillar skid steer loader attachments allowing tasks that would normally be inaccessible to traditional machinery to be tackled, a concept

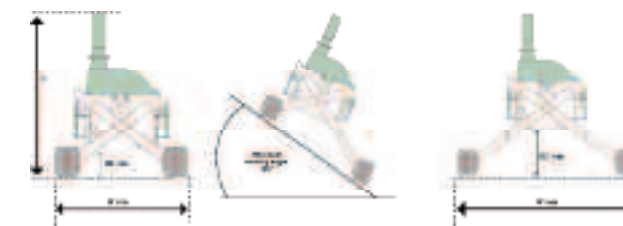
saving considerable time and money. Other attachments such as a 300mm chipper, a 2500mm heavy duty flail head and stumpgrinder are also being designed to compliment the range. The Multi-Task unit is fitted with a 118PS diesel engine (compliant with EURO Emission 4) and patented SAFE-Trak system, enabling safe working on banks in excess of 35°, whilst keeping the driver's seat level. Controlled by Parker's innovative IQAN solution enables the many functions of the vehicle to be selected and controlled using a joystick inside the cabin, allowing the Multi-Task 120 to be operated safely and effectively. Additionally the IQAN based auto drive functionality, which acts as a type of cruise control, slowing down the machine if a higher load is sensed, or vice versa; again, resulting in less work for operators and more efficient performance. Option of remote diagnostics, offering its customers immediate support wherever they are in the world. The compact construction and the multitude of uses of the basic machinery platform means maximum flexibility for projects in the building and vegetation sectors.

SAFE-Trak Technology

The SAFE-Trak technology was designed to allow our range of wood chippers to access difficult terrain and enable the operator to be out of the danger zone when operating on embankments of roads and railways.

The fully independently adjustable legs can be raised or lowered together or separately depending on the type of terrain to be covered. When fully retracted the machine can track as any ordinary tracked machine. Raise both legs to give

massive ground clearance. Raise either leg to give secure stability when traversing slopes in excess of 35 degrees.



Multi-Task 120 Features

Safety Cab



Designed to comply with both roll over (ROPS) and falling object protection (FOPS). Options of having break proof glass, Polycarbonate Lexan Marguard windows and optional protection bars.

Cab Interior



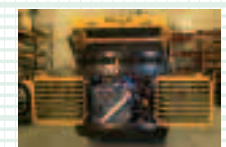
Fitted with an air suspension seat that tilts electrically so the operator can sit level when working on slopes and a safety belt.

Machine Controls



The control levers are fitted to the armrests of the seat and give easy control of the tracks, telescopic legs and front linkage/attachment.

Power Plant



Powered by a 118PS Deutz engine, driving 1 open circuit and 1 closed loop hydraulic pumps to give the performance you would expect from the tracks and attachments simultaneously.

Hydraulics



Using SAM Hydraulik pumps and Parker valves the Multi-Task has excellent performance characteristics. The tracks operate with Parker 2 lever proportional drive controls via a single pump and the second pump supplies the attachment hydraulics.

SAFE-Trak System



Incorporates 2 independently controlled telescopic legs fitted with metal hydraulic tracks. To give stability on slopes and up to 640mm ground clearance.